

NOTES:

1. TERMINAL FOR USE WITH 5557 SERIES HOUSINGS.
2. MATES WITH 5558, 5566 AND 5569 SERIES CONNECTORS.
3. REFER TO DWG. NO. CS-5556*/5558* FOR CRIMP SPECIFICATIONS.
4. PRODUCT SPECIFICATION AND PROCESSING PARAMETERS: SEE PSX-44485-0001.

MATERIAL:

1. CDA 510 PHOS. BRONZE .0080±.0004/(0.203±0.010) THICK.

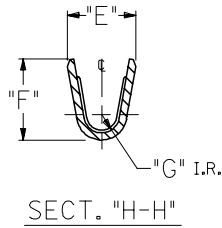
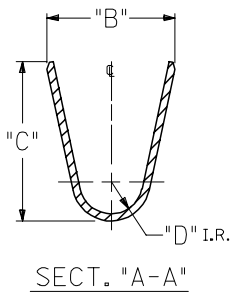
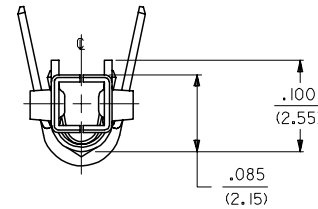
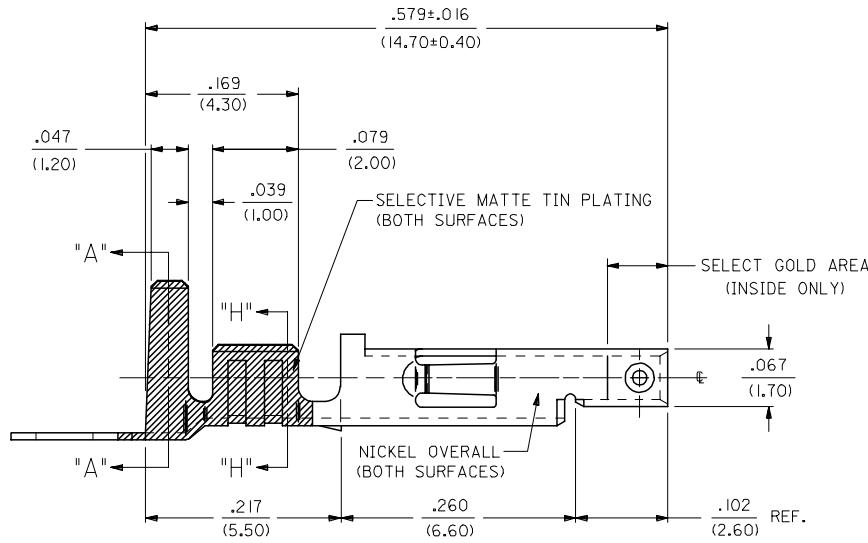
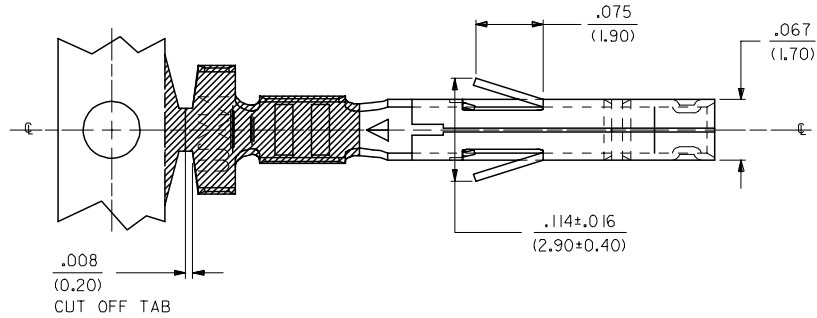
PLATING: PER SDES-88-***

*2 = SELECTIVE GOLD PLATE .000030/(0.00076) MIN., AND SELECTIVE MATTE TIN .000100/(0.00254) OVER .000050/(0.00127) MIN. NICKEL OVERALL.

*3 = SELECTIVE GOLD PLATE .000015/(0.00038) MIN., AND SELECTIVE MATTE TIN .000080/(0.00203) OVER .000050/(0.00127) MIN. NICKEL OVERALL.

*4 = SELECTIVE GOLD PLATE .000050/(0.00127) MIN., AND SELECTIVE MATTE TIN .000100/(0.00254) OVER .000050/(0.00127) MIN. NICKEL OVERALL.

*THE PRIMARY SHIPPING CARTON WILL BE LABELED "COMPLIANT TO RoHS DIRECTIVE 2002/95/EC AND ELV ANNEX II OF DIRECTIVE 2000/53/EC." CARTONS WITHOUT THIS LABEL MAY CONTAIN PRODUCT WITH TIN-LEAD PLATING.



REVISE NOTE 4 FC NO: UCP2006-1927 DRAWN: ADRIANOL 2006/02/17 CHKD: GPOLGAR 2006/02/17 APPR: ICOMERC.L 2006/02/17	DESCRIPTION
	QUALITY SYMBOLS
	▽=0
	▽=0
C2	REV

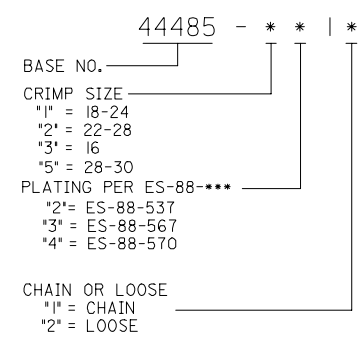
GENERAL TOLERANCES (UNLESS SPECIFIED)	
mm	INCH
4 PLACES ± .010	± .0004
3 PLACES ± .014	± .0005
2 PLACES ± 0.25	± .010
1 PLACE ± 0.36	± .014
ANGULAR ±1/2°	

DIMENSION STYLE	
IN/MM	DATE
DRAWN BY	DATE
GEP	08/08/94
CHECKED BY	DATE
RJF	08/08/94
APPROVED BY	DATE
RJF	08/08/94
MATERIAL NO.	DOCUMENT NO.
SEE CHART	SD-44485-****

SCALE 10:1	DESIGN UNITS METRIC	THIRD ANGLE PROJECTION
HIGH CYCL'G TERM FEM CRIMP, MINI-FIT JR. BLANK-PLATE-FORM		
MOLEX INCORPORATED		
SHEET NO. 1 OF 2		SHT. REV.
THIS DRAWING CONTAINS INFORMATION THAT IS PROPRIETARY TO MOLEX INCORPORATED AND SHOULD NOT BE USED WITHOUT WRITTEN PERMISSION		

ITEM NO.	WIRE GAGE	QUANTITY PER REEL	DIM. "B"	DIM. "C"	DIM. "D"	DIM. "E"	DIM. "F"	DIM. "G"
44485-1211	18-24 GA.	4,000	.142±.012	.177±.016	.035	.075±.012	.091±.016	.020
44485-1212			(3.60±0.30)	(4.50±0.40)	(0.90)	(1.90±0.30)	(2.30±0.40)	(0.50)
44485-2211	22-28 GA.	6,000	.091±.012	.091±.016	.024	.071±.012	.065±.016	.016
44485-2212			(2.30±0.30)	(2.30±0.40)	(0.60)	(1.80±0.30)	(1.65±0.40)	(0.40)
44485-3211	16 GA.	4,000	.142±.012	.177±.016	.035	.091±.012	.106±.016	.024
44485-3212			(3.60±0.30)	(4.50±0.40)	(0.90)	(2.30±0.30)	(2.70±0.40)	(0.60)
44485-5211	28-30 GA.	6,000	.091±.012	.091±.016	.024	.050±.010	.044±.010	.010
44485-5212			(2.30±0.30)	(2.30±0.40)	(.60)	(1.27±0.25)	(1.12±0.25)	(0.25)
44485-1311	18-24 GA.	4,000	.142±.012	.177±.016	.035	.075±.012	.091±.016	.020
44485-1312			(3.60±0.30)	(4.50±0.40)	(0.90)	(1.90±0.30)	(2.30±0.40)	(0.50)
44485-2311	22-28 GA.	6,000	.091±.012	.091±.016	.024	.071±.012	.065±.016	.016
44485-2312			(2.30±0.30)	(2.30±0.40)	(0.60)	(1.80±0.30)	(1.65±0.40)	(0.40)
44485-3311	16 GA.	4,000	.142±.012	.177±.016	.035	.091±.012	.106±.016	.024
44485-3312			(3.60±0.30)	(4.50±0.40)	(0.90)	(2.30±0.30)	(2.70±0.40)	(0.60)
44485-5311	28-30 GA.	6,000	.091±.012	.091±.016	.024	.050±.010	.044±.010	.010
44485-5312			(2.30±0.30)	(2.30±0.40)	(.60)	(1.27±0.25)	(1.12±0.25)	(0.25)
44485-1411	18-24 GA.	4,000	.142±.012	.177±.016	.035	.075±.012	.091±.016	.020
44485-1412			(3.60±0.30)	(4.50±0.40)	(0.90)	(1.90±0.30)	(2.30±0.40)	(0.50)
44485-2411	22-28 GA.	6,000	.091±.012	.091±.016	.024	.071±.012	.065±.016	.016
44485-2412			(2.30±0.30)	(2.30±0.40)	(0.60)	(1.80±0.30)	(1.65±0.40)	(0.40)
44485-3411	16 GA.	4,000	.142±.012	.177±.016	.035	.091±.012	.106±.016	.024
44485-3412			(3.60±0.30)	(4.50±0.40)	(0.90)	(2.30±0.30)	(2.70±0.40)	(0.60)
44485-5411	28-30 GA.	6,000	.091±.012	.091±.016	.024	.050±.010	.044±.010	.010
44485-5412			(2.30±0.30)	(2.30±0.40)	(.60)	(1.27±0.25)	(1.12±0.25)	(0.25)

LEGEND:



SEE SHEET ONE EC NO: UCP2005-2253 DRWNS: STEWART 2005/04/22 CHKD: GOLFAR 2005/05/04 APPR: YMARGULLI 2005/05/04 REV C1	QUALITY SYMBOLS 	GENERAL TOLERANCES (UNLESS SPECIFIED) <table border="1"> <tr> <th></th> <th>mm</th> <th>INCH</th> </tr> <tr> <td>4 PLACES</td> <td>± .005</td> <td>± .0004</td> </tr> <tr> <td>3 PLACES</td> <td>± .003</td> <td>± .0002</td> </tr> <tr> <td>2 PLACES</td> <td>± .002</td> <td>± .0001</td> </tr> <tr> <td>1 PLACE</td> <td>± .001</td> <td>± .00005</td> </tr> </table>			mm	INCH	4 PLACES	± .005	± .0004	3 PLACES	± .003	± .0002	2 PLACES	± .002	± .0001	1 PLACE	± .001	± .00005	DIMENSION STYLE IN/MM DRAWN BY DATE GEP 08/08/94 CHECKED BY DATE RJF 08/08/94 APPROVED BY DATE RJF 08/08/94	SCALE 10:1 DESIGN UNITS INCH THIRD ANGLE PROJECTION	TITLE HIGH CYCL'G TERM FEM CRIMP, MINI-FIT JR. BLANK-PLATE-FORM
		mm	INCH																		
	4 PLACES	± .005	± .0004																		
	3 PLACES	± .003	± .0002																		
2 PLACES	± .002	± .0001																			
1 PLACE	± .001	± .00005																			
DRAFT WHERE APPLICABLE MUST REMAIN WITHIN DIMENSIONS		MATERIAL NO. SEE CHART SIZE C	DOCUMENT NO. SD-44485-****	SHEET NO. 2 OF 2	MOLEX INCORPORATED																
THIS DRAWING CONTAINS INFORMATION THAT IS PROPRIETARY TO MOLEX INCORPORATED AND SHOULD NOT BE USED WITHOUT WRITTEN PERMISSION																					